

# Turtle Rock Newsletter

*The Best Place on Palmer Ranch*  
**July 2021**

INSIDE this ISSUE...	Page
President's Letter	2
Treasurer's Report	3
Manager's Report	4,5
Landscape and Grounds	6,7,8
Communications	9
Mail Boxes	10,11
ARC Report	12,13
TR Women's Club	14
TR Men's Club	15
Quotes	16
Bird Notes	17
TROM Updates	18
FIREWORKS	19
A Fish Tale	20
Knit & Stitch	21
Information	22

**In the Turtle Rock Newsletter proof readers check articles for errors in spelling, punctuation, grammar, and sentence structure.**

**The author of each article is responsible for the factual accuracy of his or her article.**

## Congratulations to our winner **Dodie Neuhauser**



She found the hidden word "Collywobbles" and her name was drawn to receive a \$25 gift card to Publix, donated by:



**Full Service Pool Maintenance**

**Owned and operated by TR Residents**



## A Letter from the President

### Greetings Turtle Rock:

Summer is here and activities and improvement projects at Turtle Rock are in full swing. The clubhouse and pool are open and residents are enjoying them again. The mailbox replacement project is back on track and should proceed quickly barring any more delays in materials delivery. The ponds shoreline restoration project is underway with the first two ponds located in Somerset to be completed in June. The first trimming of the low maintenance zones around the pond perimeters was to be completed in June. The power washing of curbs and sidewalks along all of the secondary streets in Turtle Rock is scheduled for completion by the end of July.

In addition to what is happening at Turtle Rock, Sarasota County is installing a new reclaimed (sprinkler) water main along Palmer Ranch Pkwy. The new main will be used to transfer reclaimed water between two storage ponds. The new main will also be connected to the Turtle Rock reclaimed water system giving us an additional feed from the north in addition to the existing feed from the south. This new connection will result in improved sprinkler pressure throughout Turtle Rock.

I would like to remind everyone to please obey the speed limit and stop signs when driving in Turtle Rock and to watch for residents riding bicycles and walking along or crossing the streets. There continue to be reports of speeding and ignoring stop signs along Turtle Rock Blvd which is very dangerous and it needs to stop.

### June Association Meeting

The Board approved the following request for funding:

Ponds Committee – Funds were approved for much needed repairs to ponds inflow and outflow structures.

Communications Committee – Funds were approved for items to be included in the new residents' welcome packets.

Landscape Committee – Formal approval was given for the emergency funds spent to spray a water retention chemical on common area grass to help prevent loss during the current dry period. Funding was also approved for painting the Turtle Rock signs at the north and south entrance and repainting the bases of the light posts.

Finance Committee – Funds were approved to repair sidewalks throughout Turtle Rock to mitigate trip hazards.

July 6, 2021 at 6:30 pm is the next Board of Governors meeting. The meeting will be held in the clubhouse and limited seating will be available. Please call the clubhouse in advance to reserve a seat if you plan to attend in person. **The meeting will also be available on ZOOM. Please plan to attend.**

**Submitted by David Bryan, President of Turtle Rock Board of Governors**



## Report From The Treasurer



**YTD Ending May 31, 2021**

	<b>Actual</b>	<b>Budget</b>
Assessments and other income	\$611,288.89	\$609,785.83

### **Operating Expenses\***

General and Administrative	153,358.64	171,558.35
Common Grounds	72,327.35	89,784.59
Access Control/Gatehouse	114,644.60	112,744.17
Facilities Maintenance	57,384.88	80,729.18
Utilities	27,154.12	34,583.34

\*Actuals are lower because several maintenance and other expenditures have been deferred to later in the year.

### **Reserve Expenses**

Contribution	\$120,386.25	120,386.25
Site Improvements	-36,095.77*	
Furn. Fixtures & Equip.	-10,992.46	

\*Donations for two benches paid out of site improvement returned to reserves-\$995 from Angela Hilton and \$950 from Bob Arnet.

### **Assessments**

Outstanding HOA Fees	5,251.33(60 days); 3,034.67(90 days)
Total 8,286	

**Submitted by Bob Oram, Treasurer**

# Manager's Message



July is here, the start of the third quarter of the year with a friendly reminder that if you are not on auto payment please mail or bring in your third quarter assessment.

With things getting back to normal, I know July 4th, the day we celebrate the Declaration of Independence, will be a great time to get together with friends and family. **Please remember, there is no use of fireworks allowed in Turtle Rock. Have fun, be respectful of your neighbors and most of all be safe.**

Although the irrigation system in Turtle Rock uses reclaimed water, everyone should strive to conserve as much water as possible. Twice a week for twenty minutes should be enough even in dry conditions. I have included the excerpts from the Turtle Rock Owners' Manual that tells us what is permissible and what is prohibited.

## **“h) Irrigation, Reclaimed Water, and Fertilization:**

**An automatic underground irrigation system is required at each property, and all homeowners must use the Sarasota County Reused Water System for irrigation water.**

**Homeowners may not use retention ponds or lakes for residential irrigation. You should follow the current watering schedule as announced by management.**

**Homeowners are strongly encouraged to ensure their rain sensors are kept in proper working order, the watering system controller is correctly set and not watering when there has been adequate rain for the lawn and planting beds.”**

**Continued on next [age**

## Manager's Message continued



As the weather warms up and the kids look for things to do, boating and fishing are always a great way to waste away the summer. I have included the excerpts from the Turtle Rock Owners' Manual that delineates what is permissible and what is prohibited.

Ponds, waterways, preserves, and wetlands may be used by residents at their own risk with approved watercraft. Approved watercraft include canoes, kayaks, row boats, and paddle boats. Sailboats, paddleboards and sailboards are prohibited. The maximum length for watercraft is 16 feet. Watercraft may be powered by an electric motor, one horsepower or less. No other powered craft will be permitted. Watercraft in use are to remain 50 feet or more from the shoreline of all residences and are not to be used in a manner that causes a nuisance. No structures, docks, or moorings may be installed in a pond or waterway. It is the responsibility of the owner to ensure that watercraft are not used in, and do not traverse, preserves and mitigation corridors. The privilege to use the ponds and waterways may be revoked for violation of these policies by the Board of Governors.

*Please note:* Because alligators are present in all ponds, residents should be cautious along pond edges. If an alligator poses concern, becomes a nuisance, or displays aggressive behavior, call Turtle Rock Management.

Please e-mail or call me with any questions or concerns.

Thank you,

Ed Olson

Vice President/LCAM

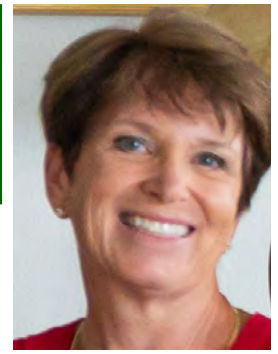
Sunstate Management

941-870-9855

[edward@sunstatemanagement.com](mailto:edward@sunstatemanagement.com)



# LANDSCAPE and GROUNDS COMMITTEE



Both Bloomings and the committee are quite discouraged with the lack of rain as the days get longer and hotter. The Board-approved replanting/rejuvenation projects—

- \* the entire south entrance areas along CSP
- \* guard-house islands,
- \* mixed plantings along the wall between the south gate and Park Shore,
- \* copperleaf shrubs along the tennis court fence,
- \* and replacement of wax myrtle at SLC SE corner with arboricolas,

are on hold until daily rains are commonplace and pressure problems with reclaimed water addressed. Several instances of zero pressure from Central County Utilities (our reclaimed water source) over the past month have us worried not only about initiating new installations, but also about preserving what is in place. The Boulevard hedge looks stressed, as do large areas of turf throughout Turtle Rock. While the recent days of rain helped, they are not yet assured. On a positive note, our entrance signs will be repainted during the month of July!

Our Committee, as well as our Turtle Rock Landscaping company, Bloomings, subscribe to the 7 principles of responsible gardening, which I want to share with you. Although I am writing this on behalf of the Landscape and Grounds Committee, the article that follows applies to your own yard's landscape. Some aspects of these concepts are beyond our personal control in the setting of our community...considering planting restrictions within easements, existing irrigation systems that are 22-27 years old, and use of lawn maintenance and chemical companies to service our landscaping. We can't all be master gardeners and spend hours per day toiling to make it perfect. But we *can* do several things to make our landscaping look and perform as best it can. Let's look at some in particular:

1. If you plan to relandscape, delete or add to existing beds or create new ones, keep in mind the ***right plant, right place*** concept. For starters, a tree that grows large should never be planted close to homes, sidewalks or driveways. Easier said than done on our postage-stamp-sized lots. But there are many trees that do not grow too large for their space, so do some research. Of course, planting sun-loving material where it will receive mostly shade, or vice versa, sets things up for failure. Keep in mind the required maintenance when selecting material, and by all means, check with members of the Landscape or ARC committee, or talk to the nurseries where you are buying material, to get advice.



# LANDSCAPE and GROUNDS COMMITTEE, Continued



2. **Water efficiently:** this typically means during early morning hours, taking advantage of dew already on the ground, reduced winds, and no direct sun to immediately dry the irrigation. However, you may experience that specific times (perhaps between 6-7am) have very low pressure, since everyone is running their system then. Try different times before noon or after 6pm. Most importantly, check to make sure your system is even running!! Your line may have a filter that is clogged, a solenoid not operational, or a rain sensor that is broken yet preventing the irrigation from coming on. While I have never had a filter for my system, we've had to replace solenoids, clean sprinkler heads of debris, repair broken lines, and replace our time clocks twice in our 23 years here. If you haven't

been to your garage to check on the irrigation timer and put it on manual test, do so. Just run the system through its paces and make sure all is functioning. If it's not, there are many reputable companies to call in for repairs. While our reclaimed water is not free, it is extremely cost efficient and an association expense—so please don't hesitate to use it when it's necessary in times of drought. Once we do start having regular rains, the irrigation schedule can be reduced. Also, during winter it is not necessary to irrigate more than once a week since vegetation slows its growth dramatically.

3. **Fertilize appropriately:** this means not overusing fertilizer! Adding mulch is in and of itself a good fertilizer—organic and slow-release. Most of us have companies that do this for us. Please don't ask them to fertilize your lawn or shrubs with high nitrogen or phosphorous (making things green) between June 1 and Sept 30—it is against county regulation during rainy season so run-off into our ponds can be reduced. Slow-release is the wisest choice, lasting longer and offering a healthier delivery method.



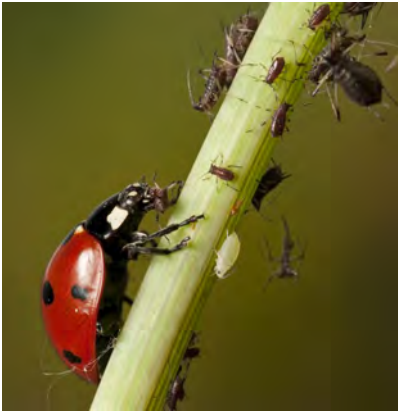
4. **Attract wildlife:** hmmm, we have plenty of that around here naturally, regardless of what we plant in our gardens. But consider planting pentas —colorful annuals that act as perennials since they will reseed themselves—that grow well year-round (even in our hot summers) and attract bees, or plant milkweed to attract monarchs.

A monarch caterpillar munching on a giant Milkweed plant, which has beautiful pale pink /purple flowers. Nurseries offering native Florida plants will have these.



# LANDSCAPE and GROUNDS COMMITTEE, Continued

5. **Mulch:** it is like an organic carpet for your yard—defines beds, reduces weeds, comes in different colors and textures, retains moisture, acts like slow-release fertilizer—what more could one ask of this simple material? Do it annually, at minimum. And by the way, our TROM requires that our landscape beds are mulched.



6. **Manage yard pests responsibly:** again, most of us hire professionals to apply chemicals. However, these pros often take the easy (cheaper) route of spraying everything with an instant-kill application, without regard to need. This destroys beneficial bugs such as lady bugs, bees, and butterflies. Insist on your chemical company using systemic insecticides—these are taken up by the plants and prevent the pests from munching on and destroying plants, while not harming beneficial critters. Occasionally, a dose of instant-kill for specific applications is needed and acceptable.

7. **Recycle yard waste:** Sarasota County makes it very easy for both individuals and companies to do this. If you work in your yard at all, you are surely collecting pruned material either in paper yard waste bags (expensive, wasteful, but fine for environment) or trash containers. Waste Management is excellent about removing our yard waste every week, so please never throw palm fronds or other matter into our preserves or the trash. Simply designate a container or two for the purpose, or just bundle fronds and branches with twine and they will be picked up and recycled for you! BTW—the county dump at the northern end of Knight's Trail offers FREE mulch and soil made from our recycled yard waste!



**Thank you** for your interest in maintaining and improving your immediate environment and reading this article to the end. If ever you have questions or need more information, there are plenty of resources to seek answers.

Submitted by: Kathrin Harris



# Communications Committee

**As we all settle into the heat of the summer, there are just a few items to bring to the community's attention that might not have been covered elsewhere.**



**GATE ENTRANCE SIGN ANNOUNCEMENTS:** We are increasing our use of the sign boards located at the North and South Gates. It's been a pleasure to applaud graduates and their families, warn about alligator mating season, and congratulate dads. We also have worked closely with the Mailbox Committee, with huge kudos to Kathy Wells, to keep the installation schedules current.

Please keep an eye on these xertz boards for community announcements. If you are in one of the Turtle Rock clubs or organizations or, if you are a resident with an important event or announcement that you think should be on the Boards, please email Grace Sammon at [gmsammon@gmail.com](mailto:gmsammon@gmail.com). We will see if we can make it happen on the Entrance Signs.

**HURRICANE RESOURCE GUIDES:** The Communications Committee has secured 400 Sarasota County Emergency Preparedness Guides. These are located at the Community Center. If for some reason you can't get to the Community Center during the week, please contact Grace Sammon at [gmsammon@gmail.com](mailto:gmsammon@gmail.com) and she will arrange for you to get one. It's really important to have a hurricane plans in place. There is also great information on our web site and in the Turtle Rock Owners' Manual (TROM). [www.myturtlerock.com](http://www.myturtlerock.com). Just a reminder, we are restricted from putting up hurricane shutters and screens until a certain number of hours before a storm is predicted and they must be removed within a certain time after the storm passes. Please check those two resources for the rules and regulations.

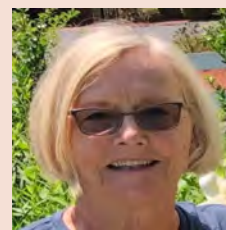
## **WELCOME COMMITTEE and WOMEN'S CLUB WORK TOGETHER:**

Members of the Welcome Team continue to welcome residents as soon as we get the information from management each month. We are also working on ways to "level up" this activity. Happily, the Women's Club is also looking at ways to increase their welcome to new and prospective members. We are looking forward to future collaborations! Meanwhile, if you are new to the community, or have a new neighbor that you think has not been welcomed yet, please contact Angela Hilton Calvo, Chair of the Communications Committee at [anhiltonsrq@gmail.com](mailto:anhiltonsrq@gmail.com).

**Submitted by Grace Sammon**

## Mailbox Taskforce – July 2021

Mailbox installation has resumed and is going well. By July 1, we expect that the following streets will have been completed: Park Shore, Great Meadow, Far Oak, Benchmark, Hanging Moss (except Savannah), Timber Chase, Treesdale, Redbriar, Brooksbend and parts of Sweet Meadow.



Keep your eye on the schedule as posted on the Turtle Rock website: <http://www.myturtlerock.com>. Under the “Community Association” tab, click on “Mailbox Task Force” to see the latest information about the project. Be on the watch for email blasts from Sunstate Management and look for signs around the neighborhood and at both entrances that will announce where installation is scheduled and when.

In advance of installation of your new mailbox, you must remove all landscaping and hard-scaping (NOT sod) within a 3.5 foot radius of your post. If you have a sprinkler head close to your post, please mark it with a flag. And remember: Bloomings will be preparing sites that the homeowners have not taken care of, and you will be charged for the work.

If you have questions about the preparation of your site, please contact one of the following task force members:

All streets within **Savannah** – Patty Fleming

**Park Shore** – Curt Gilroy

**Brooksbend** – Kathy Wells

**Deerbrook Circle** – Bob Oram

**Far Oak Circle** – Curt Gilroy

**Glade Fern Ct** – Kathy Wells

**Great Meadow** – Curt Gilroy

**Timber Chase** (except cul-de-sac) Harry Hopes

**Hanging Moss** outside Savannah – Kathy Wells

**Timber Chase cul-de-sac** – Kathy Wells

**Little Brook Ct** – Harry Hopes

**Meadow Rush Loop** – Bob Oram

**Nice Way** – Roberta Maloney

**Redbriar Ct** – Kathy Wells

**Ridgelake Pl** – Kathy Wells

**Sabal Lake Circle** – Kathrin Harris

**Sweetmeadow Circle** – Kathy Wells

**Treesdale Ct** – Kathy Wells

**Wildflower Ct** – Harry Hopes

**Continued on next page**

## Reminders:

Disposal of landscaping and hardscaping waste will be handled by Waste Management.

Pavers, bricks, stones and similar are considered “construction debris” by Waste Management. Each household is entitled to put at the end of the driveway for weekly pick-up four 32 gallon containers of debris weighing no more than 40 pounds each. Yard waste should be cut and bagged (40 pounds maximum) or bundled in 4 foot long bundles of 40 pounds maximum.

The new posts will be surrounded by a concrete donut and new sod will be put down by the Association. Given the current drought, sod will not be laid until we begin to experience consistent daily rain.

No plantings or curbing will be allowed around the new posts. This will make maintenance easier and provide a uniform appearance.

Please do not touch your new mailbox or post for at least 24 hours while the cement hardens. Your mail delivery will be held for one day by the postal service and delivered the following day.

**ATTENTION NICE WAY RESIDENTS:** Your HOA has contracted Brewer Landscaping to prepare the site around your mailbox. This will be done at no cost to you. If you wish to do it yourself in order to save plantings or hardscape, that is fine. Just do it before the landscaping crew is scheduled to arrive. You will be given ample notice of this.

In order to keep our new mailbox posts looking beautiful, it is important to prevent your dogs from urinating on them. Since the installation of the street signs and stop signs, it has been noticed that corrosion has taken place and odors emanate from them. Please do not allow your pets to use the posts as their bathroom! Your cooperation is appreciated by everyone.

### Out with the Old



### In With The New



**We are very pleased with the look of the new mailboxes and hope you are too.**

**Please send any comments or questions to  
[communications@ myturtlerock.com](mailto:communications@myturtlerock.com)**

**Submitted by Roberta Maloney**



# ARC Report



## “What’s happening with my palms?”

Let’s look at some common conditions you may notice in your palms, and what (if anything) needs to be done about them. **Brown, “dead” fronds:** It’s natural for older fronds to turn brown and die back. Do you need to remove them? That depends. Self-cleaning palms, such as royal, foxtail, Alexander, areca, adonidia (Christmas), royal, Bismark, and carpentaria among others, have fronds that fall off naturally when spent. Pulling or cutting fronds off a self-cleaning palm can harm it. Self-cleaning palms feature a crownshaft at the top of the trunk (often green), which comprises the expanded bases of the fronds above.



Other palms (queen, for example) do not self-clean. When – and only when – fronds are completely brown, they can be removed with a clean saw. Resist the temptation to authorize a hurricane cut, which weakens your palm by taking away live fronds with needed nutrients. (A hurricane cut does not in fact protect the palm during hurricanes.)

**Yellow or pale green fronds:** Your palm may be over- or under-watered. How to tell? If the soil around the base is wet, it is likely over-watered. Also, if fronds are limp, the culprit is probably over-watering. If they are crispy and fragile, the palm probably needs more water. Yellow fronds can also indicate a need for nutrients including magnesium. In some cases, when most fronds are yellow and drooping and any fruits or nuts are dropping prematurely, your palm may be infested by lethal yellowing, a disease spread by insects, or by a fungus. Consult an arborist about systemic injections or tree removal to avoid having a dead tree later on, or spreading disease to other palms.

**Spotty-looking fronds:** Leaf-spotting fungi are common. In most cases, leaf spots won’t kill your palm. Avoid wetting fronds during irrigation. While fungicides are not generally necessary, copper or other alternatives may be applied, typically during the spring. This is best done by a professional to avoid overtreatment.

**Continued on next page**

## ARC continued

**“Sooty” fronds:** Gray or black mold can grow on palm fronds. Fed by sugar found in insect waste, it’s usually not a health problem for the palm. But if your palm becomes unsightly, an arborist can treat it to minimize mold.



**Rotting trunk, conks around base, and/or overall poor condition of tree:** Check with an arborist to learn if your palm has a fungal infection. Conks around the base (see photo) can indicate Ganoderma fungus, which is spread by spores and is locally common. A palm infected with Ganoderma should be removed. (Prevention is key! When having palms trimmed, make sure you actually observe your contractor sterilizing the tools. Poor trimming practices are a frequent cause of fungal infections.)

**Cracked trunk:** Rot from within, insect damage, lightning strike, or another problem can cause trunks to crack. Some trunk damage can be contained with a metal or screening patch coated with plaster. If the crack is a symptom of a rot, the palm may need to be removed.

**Frizzle-top:** Queen, royal, sago, and other species may “tell” you they are suffering from manganese deficiency. Look for withered, dry frond leaves and stubby, distorted, curly new fronds. The palm may eventually die if untreated. Invest in a professional tree fertilization program. If you catch this malady in time, you may well nurture your palm back to health.



**Palms need nutrients:** Palms in Turtle Rock generally get plenty of nitrogen and phosphorous from our soil and reclaimed-water irrigation. However, they may lack manganese, magnesium and/or boron, and will benefit from regular fertilization, whether by a professional or by purchasing slow-release (as required locally) palm fertilizer and carefully following instructions. Remember not to fertilize with any nitrogen or phosphorous between June 1 and September 30, per county regulation. This article doesn’t cover all possible palm issues, so consult a professional as needed. Keeping Turtle Rock’s palms healthy is a privilege for us all. Please contact the ARC if you are considering palm or any tree removal or replacement. The committee is happy to work with you.

**By Michelle van Schouwen, Secretary, Retention Pond Committee**

Image credits: Crownshaft of a royal palm: Courtesy of SKsiddhartthan, Wikimedia Commons  
Ganoderma conk: Courtesy of BEdward L. Barnard, Florida Department of Agriculture and Consumer Services, Bugwood.org Frizzle-top on queen palm: Courtesy of T. K. Broschat, UF/IFAS



## ***Turtle Rock Women's Club***

The Turtle Rock Women's Club hosted its June luncheon **IN PERSON** and it was a huge success! Over 40 members joined us to dine al fresco under cover at our local Applebee's. It was absolutely wonderful to get together and everyone enjoyed the opportunity to reconnect – lots of smiles, chatting and laughter.



There is no luncheon this month due to the July 4th holiday but we'll be back together on August 4th at Turtles on Little Sarasota Bay. See the TRWC July newsletter for menu and other details.

We'll also be ramping up more activities for this fall including a Mix & Mingle event in October and possibly a new social event in December.

If you'd like more information on membership or activities, please don't hesitate to reach out to us at [TurtleRockWomensClub@gmail.com](mailto:TurtleRockWomensClub@gmail.com) to find out more.

**Submitted by Jean Contillo**



# ***Turtle Rock Men's Club***



We were very pleased at the turnout for our first Men's Luncheon in sixteen months. It was great to get together once again and enjoy the company of our neighbors. Because attendance during the summer months has historically been very low, we will renew the luncheons in September. As we are always looking for new locations to hold these meetings, we invite you to suggest locations you think the Members would enjoy.

\*\*\*\*\*

## **Happy July 4th - Independence Day!**

We celebrate American Independence which occurred with the passing of the Declaration of Independence. Wishing everyone a safe and wonderful Holiday!



\*\*\*\*\*



We wish the following a Happy July Birthday! If I have missed anyone, email me and I will update the TRMC website.

**Joe Andrews, Neil DeLorenzo, Harry Hopes,  
Bill Kozlowski, David Silberstein,  
George Straschnov**

\*\*\*\*\*

If you know of someone who may be interested in joining the Men's Club, please have them contact me and I will be glad to assist them in the process of joining.

Submitted by:  
**Ken Rosemann**

## Quotable Quotes

**“One cannot and must not try to  
erase the past merely because it  
does not fit the present.”  
Golda Meir**

**“Before you criticize someone, you  
should walk a mile in their shoes.  
That way when you criticize them,  
you are a mile away from them  
and you have their shoes.”  
Jack Handey**

**“Genius is 1% inspiration and 99%  
perspiration.”  
Thomas Edison**

# Bird Notes

July 4th is upon us as well as a summer we only dreamed about last year. Many of our families will be visiting to enjoy our company and all that Sarasota has to offer. Before they head for the beach, remind them that:

\*Running at birds to make them fly stresses them.



\*Roped off areas on Siesta are there to protect Snowy Plovers which are nesting.

\*Between the roped off areas on Siesta and the water, watch where you step as Plovers will move back and forth to feed.

\*On Lido, roped off areas protect Black Skimmer nests.



\*Dogs are not allowed on  
Siesta or Lido Beaches.

They stress the birds and leave unwanted deposits.

**Enjoy the beach and be kind to the birds!**

Submitted by Janet Smith



# **Turtle Rock Owners' Manual (TROM) Update Committee**

The TROM update committee has been working for the past month to go through the last version of the TROM that was officially released 1/22/2019 and make any adjustments to bring it up to date. The committee meets every other Wednesday to review each page and section carefully to make any necessary adjustments or clarifications as needed. As of the June 16<sup>th</sup> work session, we have completed the review up to the end of Section 2. Most of the focus has been on improving clarity/eliminating confusion and removing duplications that may appear in multiple locations within the document.

There is quite a bit of important information within this document for the homeowners and we are making sure the information is accurate, relevant and that our TROM meets the standards set forth in our charter and the Turtle Rock Covenants, Conditions, and Restrictions. We are also governed by the Palmer Ranch Master Association.

Members of this working committee are Michelle van Schouwen, Deirdre Gage Cronin, Harry Hopes, Karen Lyon, Curt Gilroy, Christa Friedlander and Gary Wells, with Ed Olson as representative from the management company.

This review process will take some time to evaluate everything, update the necessary sections and appendices (e.g., new mailbox standards, responsibilities, etc), and have our version ready for the TR Board's review and approval, hopefully later this summer. Once it is approved, it will be placed electronically on the TR website and will supersede the version that is there now. The link will also be sent out via an email blast when it becomes available.

Regards,

Gary Wells

TROM chair

**Fireworks are prohibited in  
the Turtle Rock Community!**

**This includes residents' property,  
common grounds, and over ponds.**



**Check the Sarasota Newspapers  
or the Television web sites to find  
times and places to enjoy fireworks.**

## Fishing On Benchmark Court



While attempting to get a four inch frog out of our lovely new mail box I heard a strange noise. My first inclination was to look skyward. However, when I looked up I didn't see anything except a great Sarasota sky. Wondering where the noise came from I started looking around. When I turned I noticed a strange sight.

At first I couldn't believe what I was seeing. There on the sidewalk laid something shiny. I went over to inspect the object and was shocked to discover a fish. As I leaned forward I was startled to see the fish do a complete 360 flipping itself over. Well, well, well I thought I've caught a live fish without the use of a fishing pole.

It was quite the spectacle so I rang the doorbell of my next door neighbors the Cooneys. Terry thought I was playing a trick on him. However, on close inspection we could see the gills still moving. With a collective effort Terry and my husband Dick ( I was supervising) managed to get our fish returned to the wild.

It was a good day.

We did a good deed and I got a real live fish story.

**Submitted by Sheila Brumberg**





Contact Edie Wolfe, [ebookit80@gmail.com](mailto:ebookit80@gmail.com).



## Congratulations to Dodie Neuhauser

who found the word **Collywobbles** which means intense anxiety, especially with stomach pain or queasiness Find this month's outlandishly inappropriate word in one of our many articles in this Newsletter and send your guess to:

**Communications@myturtlerock.com.**

Your name will be entered into a drawing to receive the \$25.00 gift card,

**Sponsored this month by Mira Mar Pool Care.**

The Winner will be announced in the next Newsletter.

### **The Communication Committee**

*The committee is looking for staff writers and photographers. If you have a knack for writing, have ideas for a monthly column or are willing to take photos of interest to the community, please contact us at [communications@myturtlerock.com](mailto:communications@myturtlerock.com).*

**THANKS for getting involved!**

#### **Committee Members and Newsletter Staff**

Patricia Tarlton, David Tarlton, Angela Hutton, Grace Sammon, Emily Miller , Steve West, Judy Bentz and Ed Olson of Sunstate Management.

Staff Writers Paula Griffin, Diane Glynn

Board Liaison: Patrick Murphy

Proofreader: Charlotte Jones

**Send comments, suggestions and articles for consideration to:**

**[communications@myturtlerock.com](mailto:communications@myturtlerock.com)**

(Text must be in Word, Photos as JPEG.)